

A1 Adelaide Data Centre

Technical Specifications



N E X T D C

where the cloud lives™



The innovation epicentre for cloud and digital transformation

A1 Adelaide is NEXTDC's newest, world-class data centre. Due for completion in Q1 FY25, A1 will be the first Uptime Institute Tier IV-certified colocation data centre facility in South Australia.

A1 Adelaide is designed to meet the growing digital infrastructure requirements in South Australia and is set to become the leading data centre solution for enterprise and government customers in this region while supporting the local ecosystem of network carriers and ICT service providers.

With its strategic CBD location, A1 Adelaide will offer high density and diverse connectivity to the South Australian, national and international digital economies.

A1 Adelaide will be South Australia's first fully fault-tolerant data centre facility and will operate to industry benchmark energy efficiency performance and waste management processes with the highest level of physical security standards. Customers can also opt-in to NEXTDC's NEXTneutral carbon neutral data centre services.

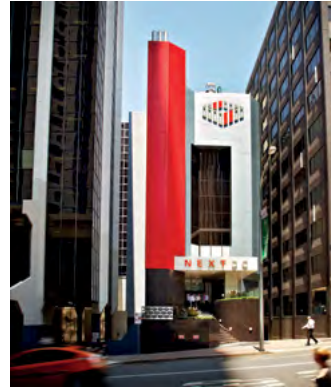
Located at 125 Frome Street, in Adelaide's CBD, A1 will deliver 5MW of critical power plus highly resilient as well as flexible ultra-low latency interconnection to NEXTDC's national ecosystem of over 750 clouds, carriers and digital services providers.

A1 will also feature mission critical operational spaces (MCX), providing highly reliable and customisable workspaces that are designed to host essential personnel supporting mission critical processes.





A1 Adelaide
125 Frome Street, Adelaide SA 5000



B1 Brisbane
20 Wharf Street, Brisbane City QLD 4000



B2 Brisbane
454 St Pauls Terrace, Fortitude Valley QLD 4006



C1 Canberra
19 Battye Street, Bruce ACT 2617



D1 Darwin
2 Harvey Street, Darwin NT 0800



M1 Melbourne
826 Lorimer Street, Port Melbourne VIC 3207



M2 Melbourne
75 Sharps Road, Tullamarine VIC 3043



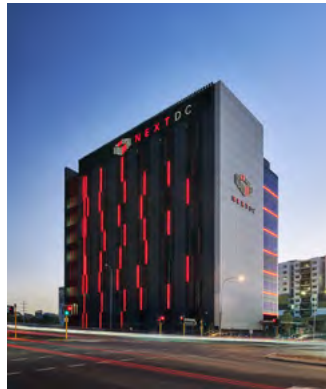
M3 Melbourne
25 Indwe Street, West Footscray VIC 3012



NE1 Newman
96 Woodstock Street, Newman WA 6753



P1 Perth
4 Millrose Drive, Malaga WA 6090



P2 Perth
11 Newcastle Street, Perth WA 6000



PH1 Port Hedland
17 Loreto Circuit, Port Hedland WA 6721



S1 Sydney
4 Eden Park Drive, Macquarie Park NSW 2113



S2 Sydney
6-8 Giffnock Avenue, Macquarie Park NSW 2113



S3 Sydney
2 Broadcast Way, Artamon NSW 2064



SC1 Sunshine Coast
44 Maud Street, Maroochydhore QLD 4558

Globally recognised and certified data centres

	Location	125 Frome Street Adelaide SA 5000
	Target open date	1H FY25
	Total power planned	~5MW
	Technical space	3,000m ²
	Rack capacity	~1,500
	Uptime Institute Certification	Tier IV



ISO 27001:2013
Information Security Management System (ISMS) certification.



ISO 14001:2015
Environmental Management System certification.



ISO 9001:2015
Quality Management System certification.



ISO 45001:2018
Occupational health and safety management systems.



Uptime Institute Tier III
Concurrently maintainable data centre infrastructure



SOC 1/SOC 2
SOC is a suite of reports from the AICPA that CPA firms can issue in connection with system-level controls at a service organisation.



PCI-DSS
The Payment Card Industry Data Security Standard is an information security standard for organisations that handle branded credit cards from the major card schemes.



Australian Government Digital Transformation Agency

Digital Transformation Agency (DTA)
Commonwealth Government's Hosting Certification Framework.

Technical specifications

Power

- IT load target capacity of 5MW.
- Adelaide's first NEXTDC Uptime Institute Tier IV-certified (Design and Construction) data centre.
- Distributed redundant N+1 2MW static UPS (battery) supported by MTU (Rolls Royce) generator engines, supporting the entire site load.
- 48 hours of fuel stored on-site.
- 100% UPS backup of entire site including mechanical systems for continuous cooling.

Cooling

- Direct and indirect free air-cooling economisation to minimise energy, carbon and water usage (to be Adelaide's most sustainable data centre).
- Hot aisle containment, ceiling plenum hot return space for energy efficiency and reliability.
- N+1 independent cooling systems, providing high levels of reliability and industry leading PUE of 1.25 (yearly average target) or 1.15 to 1.2 (yearly lowest) dependent on customer allowable air temperatures.
- 24 hours of water stored on-site (minimum).

Fire suppression and monitoring

- Very Early Smoke Detection Apparatus/Multipoint Aspirated Smoke Detection.
- Inert gas fire suppression with low pressure release, onsite supply primary and reserve.
- Power and cooling continue to be maintained even during a fire suppression event.
- Leak detection systems.
- Emergency warning systems throughout the building.
- Distributed fire alarm controls equipment to avoid single point of failure.
- Fully addressable analogue fire alarm system comprising Fire Indicator Panel (FFIP), mimic panels, heat detection and MASDs systems.

Security

- ASIO Physical security ZONE 4 capable.
- Designed and built to meet minimum requirements for a Protective Security Policy Framework (PSPF).
- Physical security concept provides the necessary measures to DETER-DETECT-DELAY-RESPOND to any security event at any of the zones.
- Ballistic rated Security Office.
- 24/7 onsite elite security operations.
- Extensive coverage by motion sensitive, high definition CCTV cameras.
- Two factor Biometric fingerprint security for data centre access.
- Individual credential checks prior to authorisation.
- Anti-cloning access card encryption.
- Secure lifts between floors.
- Intruder-resistant glass, steel mesh and solid concrete walls.
- Secure, undercover loading dock facilities for deliveries.
- Remote monitoring and rack access control via ONEDC®.
- Monitoring of news and weather for external security risks.

Sustainability

- Water cooled chiller technology with variable speed compressors.
- Energy efficient lighting (fluoro or LED) meeting AS1680.2.2 standard.
- Low volatile organic compound (VOC) materials and paint.
- Target PUE is 1.25 at peak load.
- Waste landfill diversion bins.
- All water flows metered and managed under continual improvement program.

Customer services

- Supporting large scale delivery of IT equipment.
- Unpacking space, with trash removal.
- Staging rooms, pre-test before move to data hall.
- Customer storage facilities available purpose-built paths from delivery to data hall for rapid install and activation.
- Support for escorted access and tours.
- Assistance with car parking and meeting rooms.
- Small package receipt and dispatch.
- 24/7/365 technical and customer support on-site (if required).
- Bookable meeting rooms and AV equipment.
- Dedicated office space for long-term private use (MCX - mission critical office space).
- Chill-out and break-out suites equipped with kitchen facilities, coffee and refreshments, TV, lounge, massage chairs and Foxtel.
- Equipment staging room.
- 2 x 3.5 tonne lifts.
- 1 x 2 tonne goods hoist.
- Customer car parking.
- Spare parts vending machine.
- Crash carts.
- Guest Wi-Fi.

Telecommunications

- Multiple street fibre connection pits and dual diverse Interconnect rooms.
- Open access for all fibre operators, Carriers, ISPs, MSPs.
- High performance, lowest latency, secure connections (via NEXTDC's AXON virtual interconnectivity platform).
- Gateway to NEXTDC's entire national ecosystem of public and private cloud providers, carrier networks and MSP services.
- Dynamic, private, and scalable connections to Microsoft Azure, AWS, Google Cloud, IBM (via AXON).
- Dynamic, private, and scalable connections to AUCloud, IBM Cloud and Oracle Cloud (via AXON).
- Dedicated, cost effective and low-latency point-to-point Cross Connects.



Why choose NEXTDC



Flexible infrastructure

Our digital infrastructure platform supports the long-term requirements of organisations, delivering solutions that meet your needs now, with the ability to scale easily to support your future needs.



Interconnected advantage

Select from flexible connectivity services ranging from Structured Cabling and Cross Connects to cloud connections, we will help build a solution that best suits your business or project requirements.



Cloud enabled

When you house your IT infrastructure in NEXTDC's data centres, your critical IT assets are interconnected directly, and natively to AWS, Microsoft, Google, Oracle, IBM and AUCloud.



Operational excellence

Our team of highly specialised operations experts are the leaders in the Australian industry. As a customer-first organisation, we pride ourselves on ensuring we deliver the highest levels of customer service and support in the country. Our expertise and passionate team are the reason we are recognised as the leading data centre services provider in the country.



Scalable networks

Establish low-latency network connections with access over 70 global carriers, networks of your choice, including global carriers, subsea cables, metro networks, SDNs and more.



Elite security

Every NEXTDC facility is monitored and secured via our elite security operations centres 24/7/365. Governed by the highest security standards globally, our facilities are purpose built to ensure a frictionless experience, governed by a comprehensive framework comprising five layers of security.

Interconnect to the digital platforms and services that fuel your growth

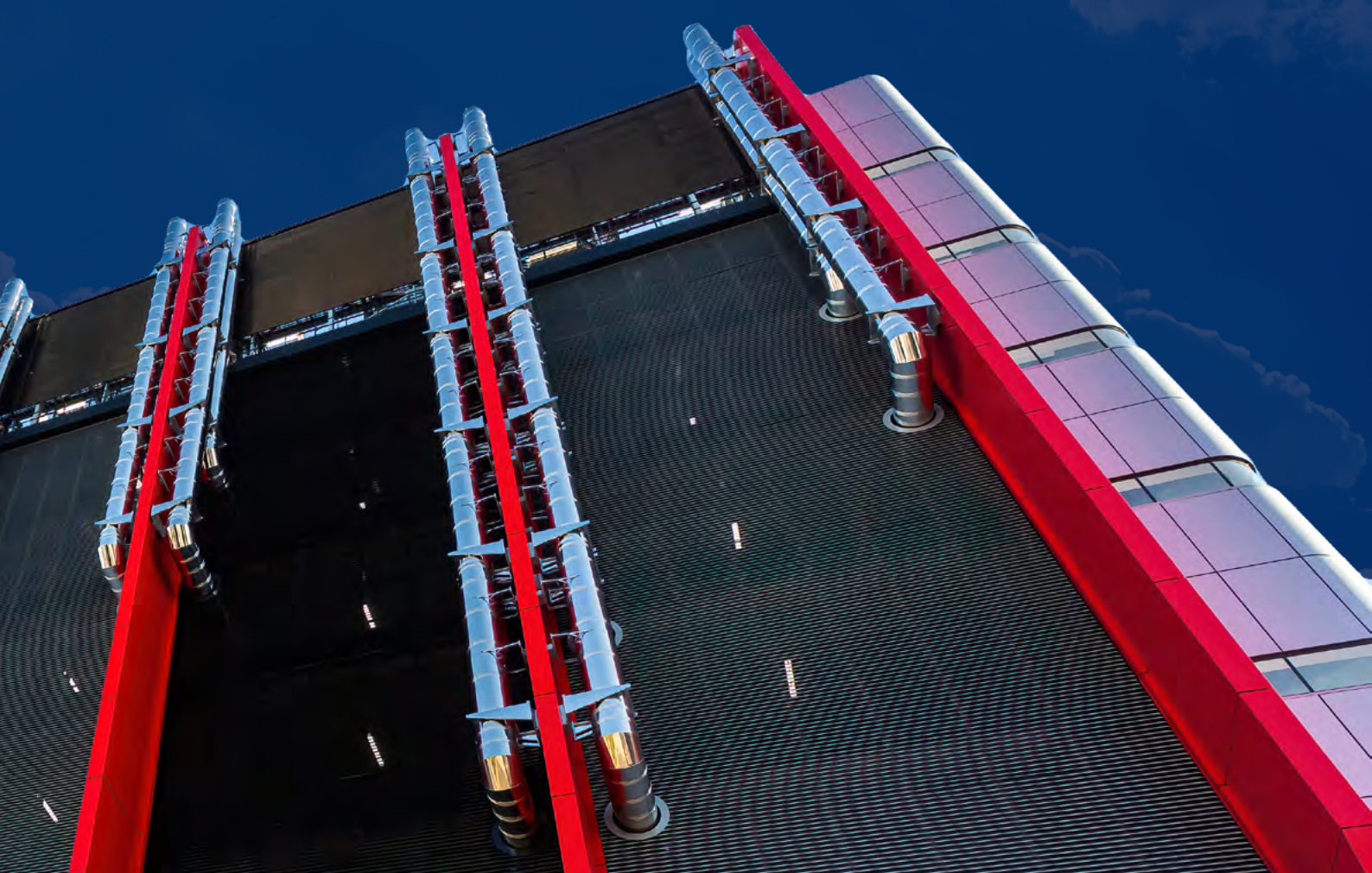
With over 730 cloud, network and IT service providers available within our data centres and continued facility expansions, our customers growth and technology needs are supported now and into the future.

NEXTDC offer organisations greater choice and guaranteed reliability when interconnecting their business to the clouds, networks and platforms that drive their business, and quality assurance when it comes to building high-performance, highly reliable and scalable Hybrid IT architectures.



The fastest most direct access to your public cloud on-ramp

Partnering with NEXTDC, means positioning your critical infrastructure in the epicentre of your digital services supply chain. Our digital infrastructure platform enables direct, secure and native access to your clouds, with the advantage of proximity. The power of proximity and speed delivers you the agility, performance, and customer experience advantages needed to increase your competitive edge.



NEXTDC's infrastructure platform delivers the security, sovereignty and interconnectivity capability your businesses requires.

Our premium solutions empower the underlying capability you need to grow and scale without friction or limitation and accelerate the momentum of data traction.

Find out how NEXTDC can help you enhance the reliability and efficiency of your digital infrastructure, so you stay focussed on driving growth and creating value for your customers.



N E X T D C

where the cloud lives™

136 398

sales@nextdc.com

nextdc.com

This document is correct at the time of printing and is for presentation purposes only. This document does not constitute an offer, inducement, representation, warranty, agreement or contract. All information contained in this document (including all measurements, photographs, pictures, artist's impressions and illustrations) is indicative only and subject to change without notice. NEXTDC Limited, its employees, representatives, consultants and agents make no representations or warranties as to the accuracy, completeness, currency or relevance of any information contained in this document and accept no responsibility or liability whatsoever for any discrepancy between the information contained in this document and the actual data centres or services provided by NEXTDC Limited or for any action taken by any person, or any loss or damage suffered by any person, in reliance upon the information contained in this document. © 2024 NEXTDC Limited ABN 35 143 582 521.